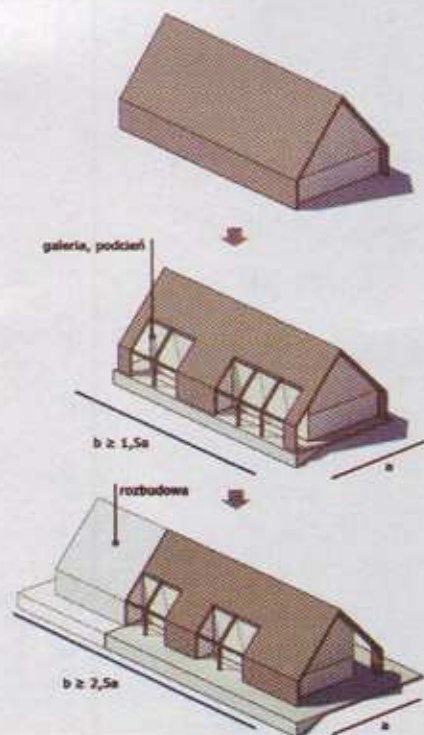




# Family house

Contemporary house



This model house is located in the Sudety Mountains in Poland. The reason the structure was placed in the southern part of the plot was dictated by many factors: it has a panoramic view; the northern part has a steep slope, which gives a wider margin of privacy for the residents. Its ridge line is oriented towards the east/west, because of functionality and utility, and also as it is consistent with the topography.

A service road is adjacent to the eastern border of the plot, on which the architect has provided four parking spaces with enough room to manoeuvre around. The access to the house and the front door are through a 4.5 m, wide walkway.

The rectangular building is

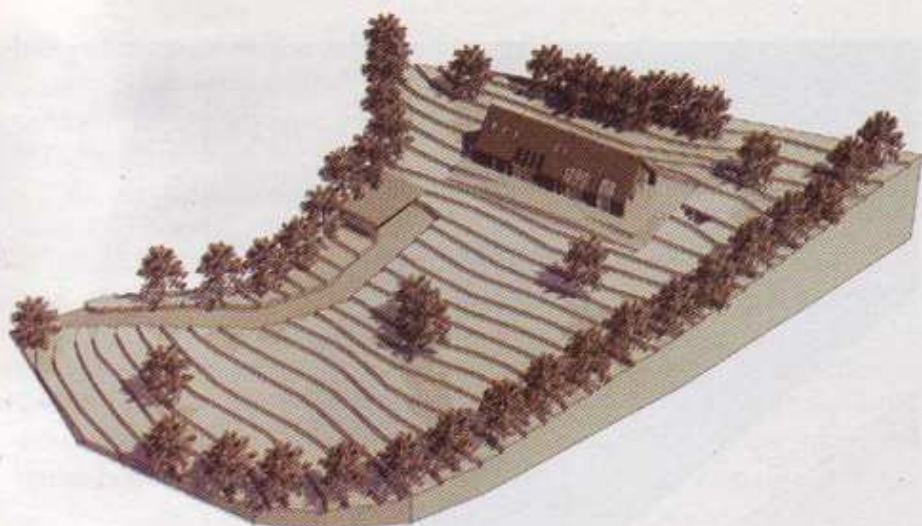
topped by a pitched roof, which looks quite rustic. However, inside, the spaces are totally contemporary and sophisticated. The building footprint was shaped using different modules for the zones according to their functional requirements. Placed towards the north-south, this orientation separates the different zones of the house and offers greater privacy to its potential residents. Wooden blinds offer protection from bad weather conditions and provide a visual barrier that prevents people who are outside from getting a direct view inside the house. Moreover, the blinds complement the building mass.

The gable walls with their characteristic horizontal partitions and vertical timber panels follow the traditional style, while the over-



## MODEL HOME


This family house designed by JPP architekci is typical of the traditional local architecture in the Sudety Mountains, Poland. But though the house incorporates many of the forms, materials and finishes characteristic of historical buildings, it is more a contemporary interpretation of the traditional features than a literal reference to them.



Visualisations: Architect Marek Panowski







What was very important for shaping the building mass are the large glazed openings, which allow a natural daylight experience.



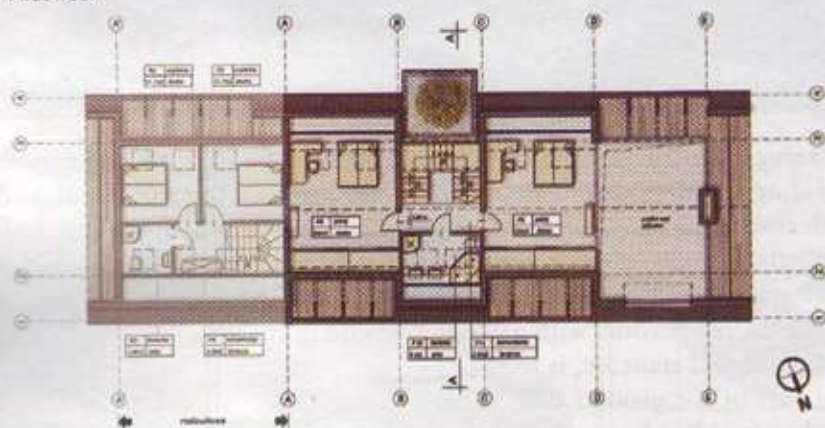


hang of the roof on the gable wall creates an additional space which can be used as a 'summer lounge'. What was very important for shaping the building mass are the large glazed openings, which allow a natural daylight experience. The architects' additional aim of installing the openings was to blur the boundary between the inside and the terrace with its traditional stone foundation, surrounding the entire building.

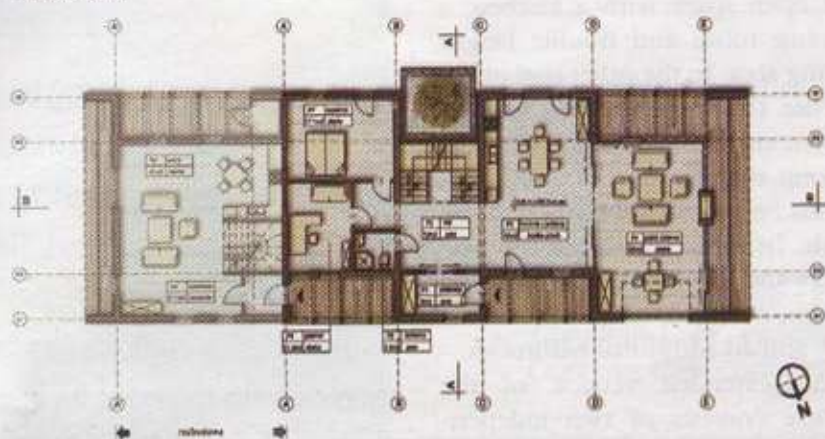
The building has many features which correspond to the traditional Sudety houses such as the typical proportions of its footprint, the steep roof and the outline of the gable walls. The contemporary form of the arcades placed along the ridge walls is an interpretation of a historical form. However, in historical houses the galleries are stretched along the whole building, while in this house the galleries are limited just to the length

The gable walls with their characteristic horizontal partitions and vertical timber panels follow the traditional style, while the overhang of the roof on the gable wall creates an additional space which can be used as a 'summer lounge'.

First floor



Ground floor





## MODEL HOME




The entrance zone, with a vestibule, hall and staircase, is the central part of the ground floor.

of a single functional module. The building was designed to allow for a flexible extension, while at the same time retaining the basic concept and the linear shape.

The entrance zone, with a vestibule, hall and staircase, is the central part of the ground floor. The 'daily zone' has been designed as an open space with a kitchen, a dining room and double height living area. In the other part of the house there are a study, a guest room and a bathroom. Two bedrooms with wardrobes and a spacious bathroom are housed in the attic. In the basement are the auxiliary and technical rooms: a boiler room, a recreation room, a laundry and an additional bathroom.

An extended version of the house consists of two indepen-

dent dwellings with two separate entrances. In the additional premises there is a living room and a kitchenette on the ground floor and two bedrooms and a bathroom in the attic. 

The building has many features which correspond to the traditional Sudety houses such as the typical proportions of its footprint, the steep roof and the outline of the gable walls. The contemporary form of the arcades placed along the ridge walls is an interpretation of a historical form.

### Materials and Finishes

The house is designed using traditional brick technology. The roof truss is made of wood. To make the mass homogeneous, the walls are faced with wooden shingles and all the construction and decorative elements of the façades are also of wood. The terrace floor outside is partly wooden and partly granite and the same granite is used on the inside terrace.

The materials inside are also natural: wood and stone. This helps to emphasise the blurring of the boundary between the exterior and interior.